

Level 5: Excerpts from Classical Literature

1 New World Symphony, mov II, Largo - Dvorak

Musical notation for the first excerpt, New World Symphony, mov II, Largo - Dvorak. It consists of two staves in G major and 6/8 time. The first staff contains the beginning of the melody: a quarter note G4, a quarter note A4, and a quarter note B4. The second staff is empty.

2 Piano Sonata #11, mov I - Mozart

Musical notation for the second excerpt, Piano Sonata #11, mov I - Mozart. It consists of two staves in D major and 6/8 time. The first staff contains the beginning of the melody: a quarter note D4, a quarter note E4, and a quarter note F#4. The second staff is empty.

3 Exultate Deo, Palestrina

Musical notation for the third excerpt, Exultate Deo, Palestrina. It consists of two staves in D major and 4/4 time. The first staff contains the beginning of the melody: a quarter note D4, a quarter note E4, and a quarter note F#4. The second staff is empty.

4 Brahm's Lullaby

Musical notation for the fourth excerpt, Brahm's Lullaby. It consists of two staves in D major and 3/4 time. The first staff contains the beginning of the melody: a quarter note D4, a quarter note E4, and a quarter note F#4. The second staff is empty.

5 The Happy Framer, from Album for the Young- Schumann

Musical notation for the fifth excerpt, The Happy Framer, from Album for the Young- Schumann. It consists of two staves in B-flat major and 4/4 time. The first staff contains the beginning of the melody: a quarter note Bb3, a quarter note C4, and a quarter note D4. The second staff is empty.

Level 5: Excerpts from Classical Literature

6 Minuet I from Anna Magdalena Bach Book - attr Bach

Two staves of musical notation for Minuet I from Anna Magdalena Bach Book - attr Bach. The first staff shows the beginning of the piece in G major, 3/4 time, with a treble clef and a key signature of one sharp (F#). The second staff is empty.

7 William Tell Overture- Rossini

Two staves of musical notation for William Tell Overture- Rossini. The first staff shows the beginning of the piece in D major, 4/4 time, with a treble clef and a key signature of two sharps (F# and C#). The second staff is empty.

8 It Was a Lover and His Lass - Thomas Morley

Two staves of musical notation for It Was a Lover and His Lass - Thomas Morley. The first staff shows the beginning of the piece in G major, 4/4 time, with a treble clef and a key signature of one sharp (F#). The second staff is empty.

9 Carmen Overture - Bizet

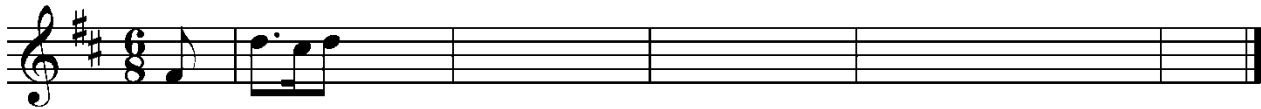
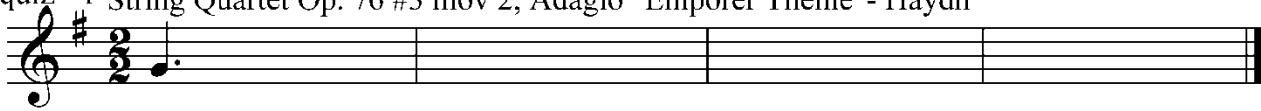
Two staves of musical notation for Carmen Overture - Bizet. The first staff shows the beginning of the piece in D major, 2/4 time, with a treble clef and a key signature of two sharps (F# and C#). The second staff is empty.

10 Siciliana from Flute Sonata #2 BWV 1031- Bach

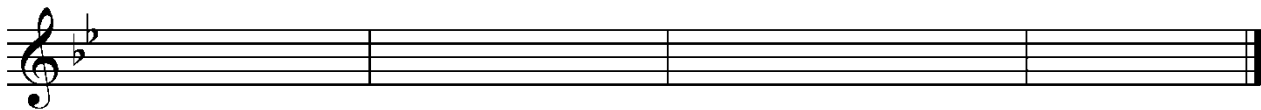
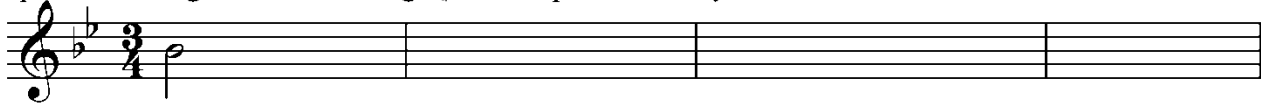
Two staves of musical notation for Siciliana from Flute Sonata #2 BWV 1031- Bach. The first staff shows the beginning of the piece in G minor, 6/8 time, with a treble clef and a key signature of two flats (Bb and Eb). The second staff is empty. A hint "hint: gm" is written below the first staff.

Level 5: Excerpts from Classical Literature
QUIZZES

quiz - 1 String Quartet Op. 76 #3 mov 2, Adagio "Emporer Theme"- Haydn



quiz - 2 Allegretto from String Quartet Op 76 #5 - Haydn



quiz - 3 Symphony #39, Mozart

